

ViaCAD™ 2D V6

Technology that thinks, as you draw

Product Overview

Precise Drafting

ViaCAD™ 2D is a powerful yet easy to use design, drafting, and technical illustration tool. ViaCAD 2D has a comprehensive set of drafting and annotation tools making it the perfect choice for producing anything from simple sketches to fully dimensioned, standards compliant, production ready drawings.

Usability

Whether you're designing a new floor plan for your house or creating a 2D mechanical drawing, ViaCAD 2D provides an environment that lets you focus on the design and not the software. The innovative user interface allows you to work freely with the intuitive snaps and alignments. Combined with the innovative tool prompts, hints, and online help, even the novice designer can quickly get up to speed with ViaCAD.

Comprehensive Drafting Tools

ViaCAD 2D supports a wealth of curve creation and editing tools including access to over 275 tools. Creation tools include numerous methods for constructing points, lines, splines, arcs, circles, ellipses, and rho valued conics. Editing tools exist for changing parameter values of curves, localized and global edits using transformations such as translating, rotating, and scaling. Additional utilities are available for filleting, filling, smoothing, chamfering, trimming, breaking, elevating, and extending.

Drawing & Annotation Capabilities

ViaCAD 2D is one of the industry's first 2D drafting tool that is capable of assimilating 3D data in a meaningful manner. ViaCAD 2D can automatically create precise wireframe and hidden line drawings from any 3D component or assemblies. This unique functionality almost entirely eliminates the laborious and time consuming task of generating production ready drawings manually. Our drawing tools will not only create accurate 2D drawing views from 3D imported parts but provides support for the creation of auxiliary, detail, and section views.

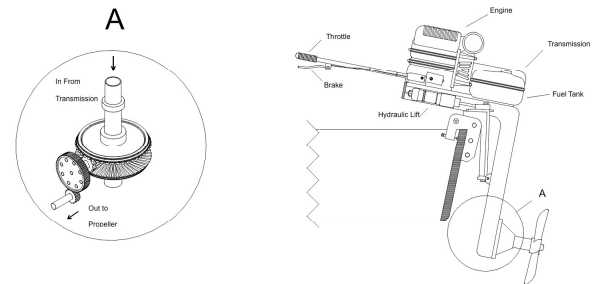
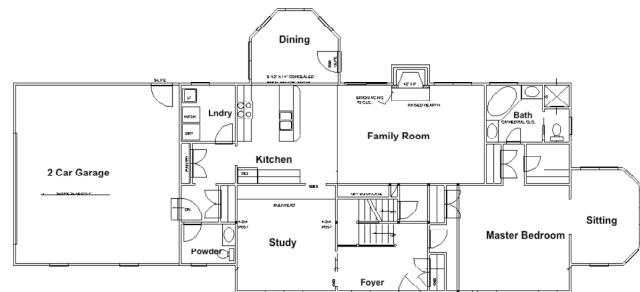
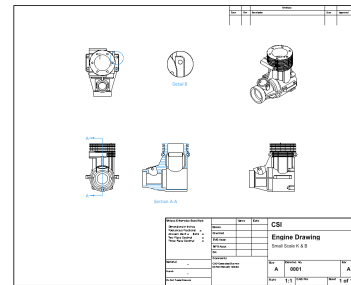
Share Data with MCAD/Enterprise Solutions

Unlike other conceptual drafting tools, ViaCAD 2D uses an industry standing precise kernel that facilitates the sharing of design information using SAT, IGES, STEP, and DXF/DWG industry standard file formats.

Powerful Tools for 2D Architectural Design

Quickly create intelligent walls that automatically heal when positioned next to other walls. Explore new wall configurations by dragging or precisely changing parameters that control length, angle, and thickness. Add custom wall styles for detailed wall components or drag intelligent doors or windows onto walls.

Punch! ViaCAD™ 2D is an intuitive 2D drafting application with extensive collection of tools for general drafting or creating technical illustrations. ViaCAD 2D supports automatic creation of 2D views from imported 3D data and shares data with AutoCAD™ and Adobe Illustrator™ products.



punch!
SOFTWARE®
www.punchcad.com

Technical Features

Usability

- Same intuitive user interface as Concepts 3D and Unlimited
- Snaps for intelligently locating x, y coordinates, tangents, and perpendiculars
- Customizable user preferences and work environment
- Customizable key short cuts
- Prompt Window for prompting designer through commands
- Data Entry Window for explicit creation and modification of geometry.
- Object show/hide tools
- Layers and Sub Layers
- Tool Tips
- Object Info Window for geometry and display parameters
- User Defined Working Units
 - Inches
 - Feet
 - Feet/Inches
 - Millimeter
 - Meters

LogiCursor™

- Snaps for intelligently locating x y z drawing positions
- Mid Points, End Points
- Centers
- Intersections (Real and Extended)
- Dynamic Axis Locking
- Along Axis Alignments
- Snap Filters
- Tangents and Perpendiculars
- Works in 3D and 2D

Data Management

- Layers and Sub Layers
- Isolate Layer
- Increment/Decrement Layer
- Layer Locking
- Layer Color Override
- Object show/hide tools
- Automated File Backups
- Group and Ungroup
- Lock and UnLock

2D Creation

- Point Tools
 - Point at location
 - Point along curve
- Line Tools
 - Line Two Points, Connected
 - Midpoint
 - Parallel
- Arc Tools
 - Start, End, On
 - Center Point, Start, End
 - Start, On, End
 - Start, Tangent, End
- Circle Tools
 - Start, On, End
 - Opposite Points
 - Center, On

- Tangent 3 Curves
- Tangent 2 Curves
- Conic Tools
 - 2 Point Start, End
 - 3 Point (Start, End, Slope, Rho)
 - 4 Point (Start, End, Slope, On)
- Ellipse Tools
 - Center, Diagonal
 - Two Diagonals
 - Opposite Points
 - Center 3 Points
 - Major Axis 3 Points
- Polygon Tools
 - Rectangle
 - Inscribed
 - Circumscribed
 - Arbitrary Points
 - From Curves
- Spline Tools
 - Fit Through Points
 - Control Polygon
 - Bezier
 - Sketch
 - Add/Remove Point
 - Smooth
 - Elevate
 - Modify/Set Slope
 - Change Type
- Text Tools
 - Horizontal
 - At Angle
 - Within Box
 - Along Curve

2D Editing & Utilities

- Dynamic modification of positions and tangencies
- Fillet and Spline Fill
- Chamfer and Corner
- Trim, Extend, Segment
- Divide, Break At
- Connect, Join
- Offset By Value or To Location
- Transformations
 - Translate, Rotate, Mirror
 - Scale (and Non Uniform)
 - Linear Duplicate
 - Polar Duplicate
 - Translate Along Path
 - Align, Stretch
- Verify
 - 2 Point Distance & Angles
 - Minimum Distance
 - Curve Lengths
 - 2D Planar Properties (Area, Centroid, Principle Moments)
 - Dynamic Curvature Plots

Annotation/Detailing

- Pen Weights, Patterns, Styles
- Dimension Tools
 - Smart Dimensions
 - Horizontal, Vertical, Parallel
 - Chain & Baseline
 - Ordinates
 - Radial & Diameter
 - Center Marks

- Leaders and Callouts
- Angular
- Tolerances & User Settings
- Stacked, Dual, Fractions

- Hatching and Fill Patterns
- Bill of Materials
- Generate drawings automatically from 3D models using templates

Data Exchange

- Concepts 3D and Unlimited
- DXF/DWG
- ACIS SAT
- IGES & STEP
- Adobe Illustrator
- Rhino™ 3DM (Import Only)
- STL
- BMP
- PICT (Mac Only)
- CGM & 3D Studio (Import Only)

Architectural Tools

- Intelligent Parametric Walls
- Automatic Healing
- Automatic Wall Dimensions
- Intelligent Doors and Windows
- Insert Objects into Walls
- Architectural Drawing Page Wizard
- Custom Wall Styles and Components
- Architectural Dimensioning

Part Library

- 26,000+ Part Library
- Drag and Drop Parts
- Dynamically Position
 - Electrical , HVAC
 - Mechanical, Construction
 - Bathroom, Kitchen, LAN, CMOS
 - Doors, Windows
 - Basic Home Design
 - Office Furniture

System Requirements

- PC
 - Microsoft Windows XP Professional, Windows 2000, or Vista
 - Intel Pentium or AMD Athlon class processor
 - 512 MG RAM or greater
 - Mouse Point Device
 - CD-ROM Drive



- Mac
 - OSX 10.4
 - OpenGL
 - G4 Processor
 - 512 MB RAM
 - CD-ROM Drive
 - Mouse (recommend 2 button mouse)



punch!
SOFTWARE®

www.punchcad.com

©2007 Punch! Software LLC.
All Rights Reserved.